



The Annette Latorre Nursery School



I met Annette about four years ago, on a picket line in Redwood City. Even then, singing together, talking with others there, I could tell: she was unique. Soon after, I saw her deep concern and understanding which she never stopped using. She was a worker, a doer - not an advisor. She didn't cross over the highway, bearing programs. She came with her hands and her heart and willingness to render service to mankind.

Annette was a member of the NAACP. She was president of the CIC. When we organized the Mothers for Equal Education, there was no question in anybody's mind that Annette should be a member of the Board of Directors. Monday mornings, she would pick up some of the older Mothers, women in the community, and bring them to our meetings. And she would transport them to and from the stores before returning home. When we established the Day School - built it out of nothing but determination and freedom thinking - again there was no doubt that Annette must be on the Day School Board of Directors. She was also one of our head teachers. She taught and supervised in the Summer Teen Program.

A young man recently said of Annette: "Of course I remember her. She was an uptight woman. She was really so different - could dig what we were talking about. I'd never met

a white woman like her before." And a teen age girl told me: "She just understood. I could tell her anything and it's funny how she would answer without your knowing what she was really saying. She really understood the struggle of Black people - never tried to put me down or analyze me."

I have to agree. Annette was an uptight woman! She had a real understanding of people, black and white. She knew something about inner feelings; and she cared. She always had a word of encouragement to offer.

As time went on and we moved into new programs, we became so effective that newspapers never published without some





cutting criticism of Gertrude Wilks, the controversial Day School, or the militant Mothers. Often I would receive a note from a Mother, black or white, saying: "I can no longer be a part of this movement." And I understood. Liberation is a brutal fight. Weary at times, I needed my friends. Some were too busy to just talk with me; others told me my ideas were just foolishness. But, not Annette. As the load became too heavy, she would pick up a new piece and somehow redistribute the weight.

I remember the day we opened the Day School office. Annette had worked; painting, cleaning, and decorating the building. She set up a room for small children, bought tiny chairs, hung pictures on the walls. You see, she thought it would be beautiful to create a nursery school in East Palo Alto where Day School teachers' children and Day School students' young brothers and sisters would form the first class. She didn't "believe in" integration; she "did" integration.

As we purchased the Mothers' Homemaking Industries building,

we planned to renovate the garage and make a nursery school of it. Annette passed on before we moved into the building. It was the unanimous decision of the Mothers for Equal Education that the Annette Latorre Nursery School be a living memorial to this little big hero in our community.

She was a very unique woman: - always just there, willing to follow. Annette understood that you have to lose a part of yourself in the fight for liberty. Your work plan may not be on a piece of paper. You may have to work without understanding why, because often there isn't time for us to explain why we are doing this like this. Annette was an ambassador for white people in this community. She proved, beyond doubt, that people can work together; that white people can successfully follow black leadership; can honestly become a part of the struggle for freedom for mankind.

I say to people concerned about DOING something to provide opportunity for youngsters, why don't you become a part of the Annette Latorre Nursery School?

Gertrude Wilks

Mrs. Gertrude Wilks
President, Mothers for
Equal Education

Mrs. Evelyn Wallace
Treasurer, Mothers
for Equal Education

Mrs. Laverne Lawson
Chairman, Nursery
School Committee

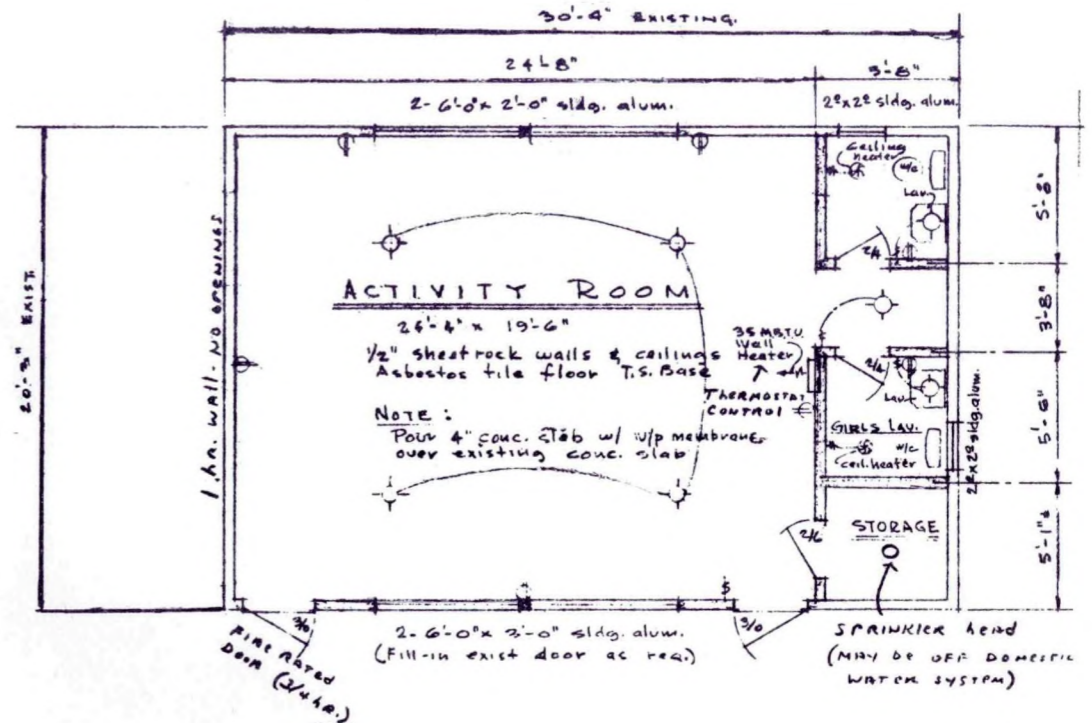
Mr. Frank Latorre
Co-chairman, Nursery
School Committee

Approximated Fiscal Needs

of the
ANNETTE LATORRE NURSERY SCHOOL

| | |
|-----------------------------------|----------|
| Garage renovation | \$5,000. |
| Indoor equipment and furniture | 2,500. |
| Outdoor equipment and landscaping | 5,000. |
| Small bus for transportation | 3,000. |

The cost of operating the Nursery School for one year, with a director and one paid teacher, will be approximately \$20,000.

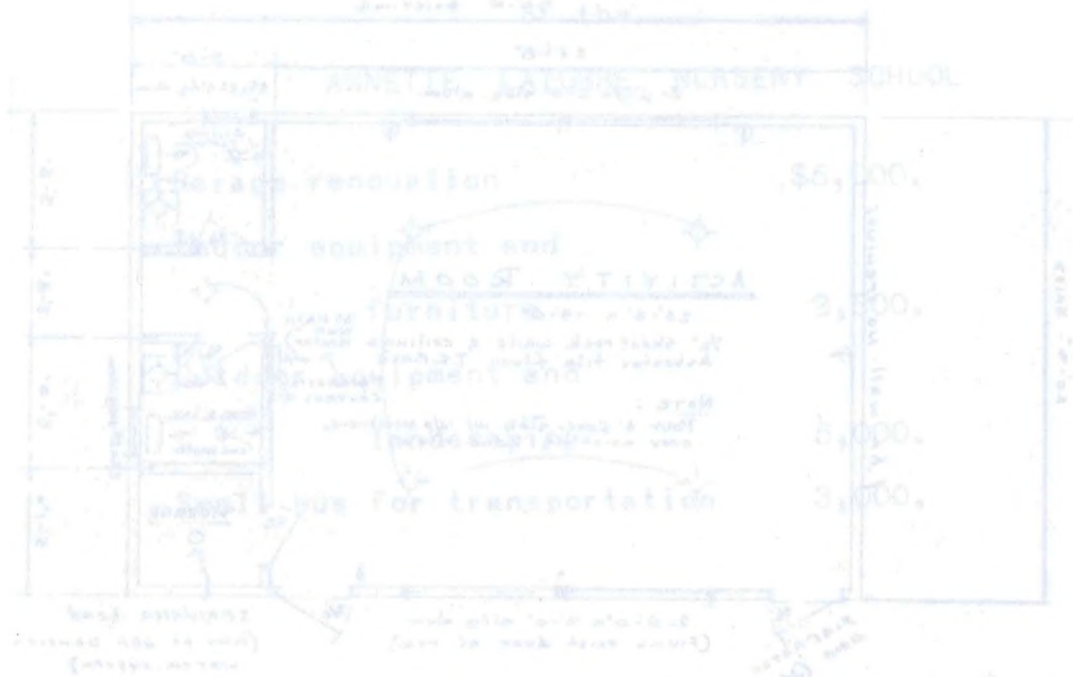


FLOOR PLAN FOR PROPOSED

ANNETTE LATORRE NURSERY SCHOOL

2358 University Ave.
East Palo Alto
California

Approximate Fiscal Needs



The cost of operating the
 Nursery School for one year,
 with a director and one paid
 teacher, will be approximately

\$30,000.

FLOOR PLAN FOR PROPOSED

ANNETTE LATORRE NURSERY SCHOOL

1328 University Ave.

peace & liberation
 commune press